

HOW TO ACCESS GWIT SERVICES

Task order activities can consist of short-term assessments lasting only a few weeks to complex multi-year projects involving resident expat and host country staff. Projects can be implemented quickly using the IQC contracting mechanism.

Early dialogue concerning Mission needs and evolving objectives is critical in identifying the nature of the action needed. This will lay a basis for developing a responsive Scope of Work and action plan.

GWIT's user-friendly website provides detailed information on how missions can access GWIT services, actual and model scopes of work, GWIT capabilities, GWIT products and additional relevant resources and links. Visit us at www.gwit.us

GWIT is a 5-year, \$35 million multi-task order Indefinite Quantity Contract (IQC) mechanism enabling Missions to access technical support when forging strategic plans or facilitating the development of sustainable, demand-driven workforce development systems.

For additional information,
please contact:

At EDC:

Evelyn Ganzglass, GWIT Director
Tel.: (202) 572-3735
eganzglass@edc.org
www.gwit.us
www.edc.org

At USAID:

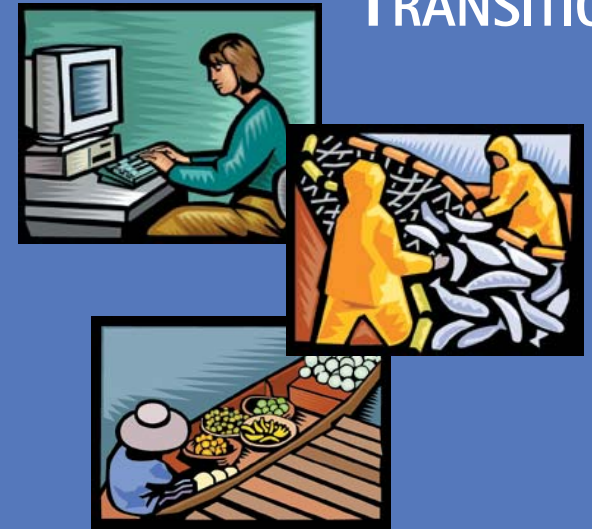
Diane Leach
Team Leader, Field Services
Office of Education
Tel.: (202) 712-5415
dleach@usaid.gov
www.usaid.gov/educ_training/gwt.htm

All images © Microsoft Corporation



Education Development Center, Inc.
1000 Potomac Street NW, Suite 350
Washington DC 20007, USA
Phone: (202) 572-3700
Fax: (202) 223-4059
www.edc.org

GLOBAL WORKFORCE IN TRANSITION



Helping Nations Build a Skilled Citizenry

U.S. Agency for International Development

In Partnership with:

Education Development Center, Inc.

and

Associates for International Resources and Development

Booz Allen Hamilton

Development Informatics

Opportunities Industrialization Centers International

Regional Technology Strategies

Other Experienced Organizations Worldwide

www.gwit.us



The GWIT Initiative

The Global Workforce in Transition (GWIT) Initiative helps build demand-driven workforce systems that are a bridge between education and the economy. Workforce development policies and programs enable people to acquire the knowledge, skills, behaviors and technologies needed to earn a living, stay employed and advance economically in the competitive global marketplace. Workforce development systems help employers find qualified workers, upgrade the skills of current workers, and use this human capacity in more productive ways that benefit all.

- ❖ **Are liberalized trade, privatization and increased global competition requiring rapid change in your country's technology and production processes?**

GWIT helps build strong public-private partnerships and responsive education systems that enable workers to gain new, higher-level reasoning, problem solving and technical skills required as a result of rapid changes.

- ❖ **Is high unemployment and underemployment, especially among youth, threatening political stability in your country?**
GWIT provides assistance in linking skill building and youth development efforts with job creation and income generation activities.
- ❖ **Are rural and urban development efforts impeded by lack of a skilled workforce?**
GWIT has the capacity to support cluster-based development and help communities adjust to new economic realities.
- ❖ **Is HIV/AIDS decimating the labor force?**
GWIT can help develop strategies for meeting critical workforce needs in countries impacted by HIV/AIDS and other major health, social and economic threats.
- ❖ **Is your country emerging from conflict?**
GWIT has workforce strategies that promote economic recovery and rebuild the productive capacity of individuals and communities.
- ❖ **Is there a need to promote entrepreneurship and enhance the productivity and growth of micro, small and medium sized firms?**
GWIT has the capacity to help develop self-sustaining workforce development systems that contribute to job creation and poverty reduction.
- ❖ **Does the education and training system adequately prepare students for current or future demands of the global market place?**
GWIT can help improve the relevance and effectiveness of formal and informal education at all levels, including adult literacy, vocational education, e-learning and other strategies that combine education and work.



AVAILABLE ASSISTANCE

GWIT project staff members are ready to work collaboratively with USAID missions to:

- ❖ Reform workforce policies and practices to improve competitiveness and economic growth
- ❖ Provide a rapid assessment of needs and impacts of workforce development
- ❖ Foster strong and sustainable public-private partnerships for addressing immediate and long-term skill shortages
- ❖ Analyze the "skills value chain" to help industry clusters improve their competitiveness
- ❖ Strengthen the capacity of host country governments, PVO's, NGO's, employer associations, trade unions and education institutions to assess, design, implement and evaluate workforce development programs
- ❖ Increase labor market transparency and efficiency in matching the supply of workers to the demand for labor
- ❖ Help labor market partners bench-mark best practices around the world
- ❖ Facilitate access to technology-based on-demand learning and employment opportunities
- ❖ Broker new partnerships between Mission country organizations and their U.S. counterparts, such as trade associations, technical and community colleges, professional organizations and NGO's